



Anandam Jedva Lake

Vadsar



Anandam Jedva Lake - Vadsar , Ahmedabad

Developed by - MHN Inframinds Pvt. Ltd.

Anandam parivar

Area - 10 acres

Architects- Vicara Design Studio

Landscape architecture - Sculpting Grounds LLP.

COPYRIGHT

Title: Anandam Jedva lake, Vadsar

Author: Sculpting Grounds

[2026], sculpting grounds

Project documentation monograph.

sculptinggrounds@gmail.com

This publication is not for COMMERCIAL USE.

ALL RIGHTS RESERVED.

All the graphics in the book have been delineated by the author under 'Anandam Jedva Lake, Vadsar'.

All drawings are by the author unless specified.

All lake photoshoot is by Mr. Tarun unless specified.

Any unauthorized reprint or use of this material is prohibited.

No part of this book may be reproduced or transmitted in any form or by any means, electronic or mechanical, including photocopying, recording, or by any information storage and retrieval system without written permission from the author.

CONTENTS

A revival story	4 - 7
Analysis	8 - 11
A new vision	12 - 25
Emergence	28 - 29
Rebirth	30 - 43
An ecological palette	44 - 45
The makers	46 - 47



A revival story

Ahmedabad, a rapidly expanding city in Ahmedabad, has historically evolved around a network of lakes that were once integral to its ecological balance and urban life. These water bodies were not merely aesthetic features; they functioned as climate regulators, groundwater recharge basins, flood buffers, and social commons. Over time, rapid urbanisation, encroachments, and neglect led to the degradation of many such lakes, disrupting both ecological systems and hydrological cycles. The revival of a lake in this context is therefore not an isolated beautification effort—it is a critical act of environmental restoration and urban resilience.

Gujarat is not only a state that is progressing socially and economically, but it also holds a leading position in the conservation of environmental resources and natural heritage. **The foundation of this progress lies in the spirit of public welfare envisioned by the former Chief Minister of Gujarat and current Prime Minister, Narendra Modi.**

Similarly, under the dedicated service and tireless efforts of the Honorable Home Minister of India and Member of Parliament from Gandhinagar, Amit Shah, Gujarat and the nation continue to advance. A remarkable example of this progress is the redevelopment of 72 lakes during his tenure, among which the Project of Anandam Jedva lake, Vadsar stands out.



2010



2025

Once an active and self-sustaining water body on the periphery of Ahmedabad, the lake historically functioned as a natural catchment, receiving runoff from nearby villages and farmlands, recharging groundwater, and supporting agrarian and ecological cycles. Rapid urbanisation and expanding infrastructure disrupted its drainage channels, blocked inlets, and altered natural contours, leading to hydrological decline and ecological loss.

The renewal reactivates the larger watershed rather than merely restoring the lake edge. Through terrain regrading, calibrated slopes, and integrated recharge chambers, surface runoff is redirected into the basin, restoring percolation and rainwater retention. Stabilised embankments and vegetated buffers reduce erosion, enhance infiltration, and rebuild aquatic and riparian habitats—re-establishing biodiversity within the urban fabric.

Beyond ecological restoration, the project transforms the lakefront into a vibrant public realm. Shaded plazas, continuous promenades, senior citizen sit-outs, and children's play areas are woven into green pockets along the water's edge. Native planting supports birds and butterflies, while installations and light canopies enhance identity and usability across seasons.

Balancing built and natural elements, the revived lake now functions as both ecological infrastructure and social heart—an inclusive civic landscape that regenerates environment, groundwater systems, and community life simultaneously.

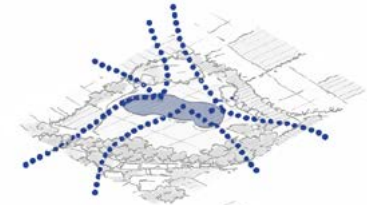
Analysis

The site was analyzed through time to understand the changes in the water holding capacity and also check on the actual potential for holding water in the catchment area.

Back in the year 2010, the catchment area of the lake was in centre and water used to flow from all the nearby farm lands.

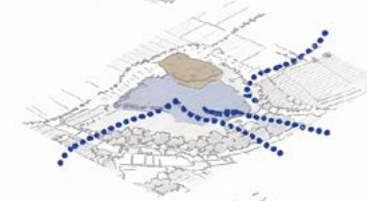
Later, due to land filling and human encroachment observed along 2014 and 2017, invasive species of *Prosopis juliflora* started to invade within the lake area by 2021.

The catchment area that held runoff water of the surrounding terrain has been filled with invasive species – leading to less water holding capacity and loosened soil conditions.



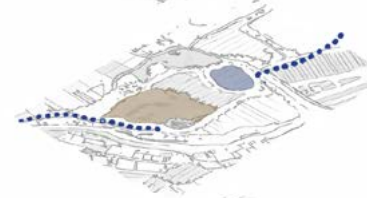
2010

Water collected in catchment area from all farmlands nearby
Valleys formed through natural terrain slopes



2013

Formation of higher-level island at one edge, reducing catchment capacity



2019

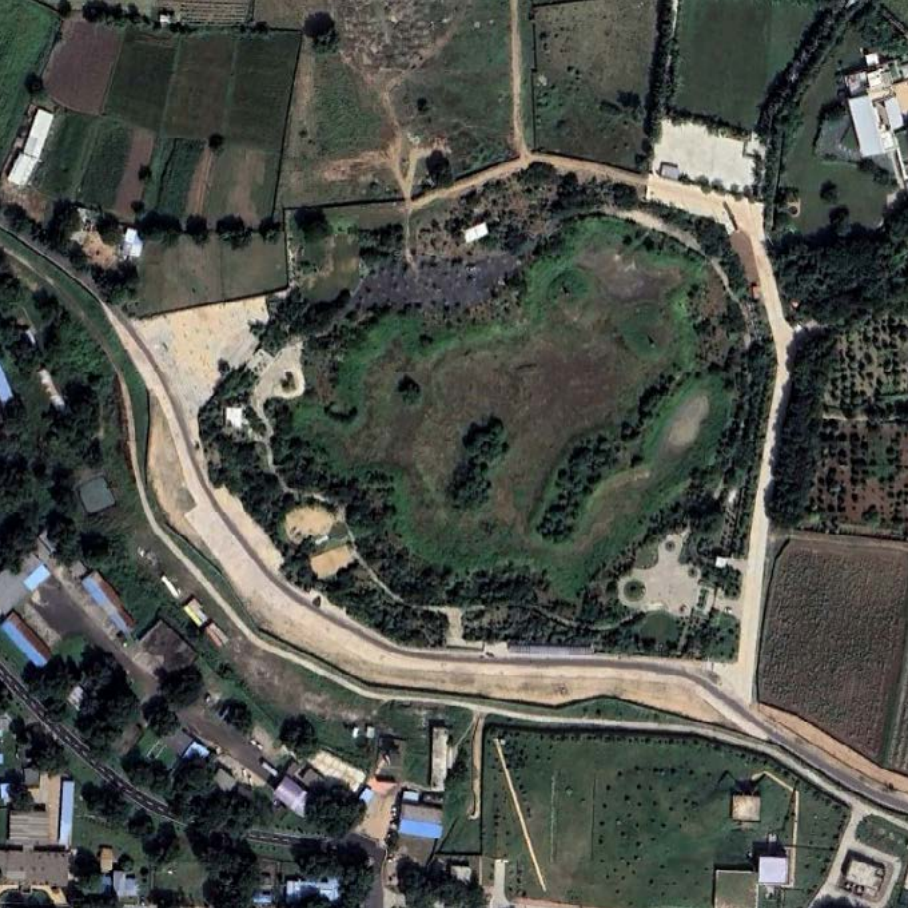
Soil removal traces found along with human encroachment



2021

Prosopis juliflora filling up the entire land – invasive species





A landscape that transformed the lake;
with its surrounding ecology and maintained a balance in the ecosystem.

Reborn in 2025

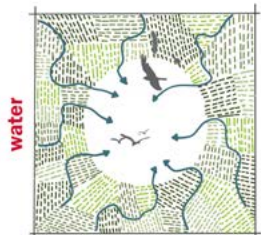
*Where runoff once wandered from fields and distant villages,
the earth had forgotten how to hold water.*

*Now the land is gently reshaped—
slopes guiding each monsoon drop back home.*

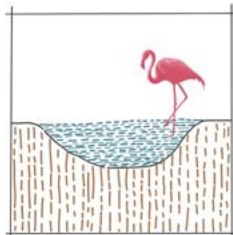
Reeds return, birds circle, and the lake breathes again.

*Along its edge, children run, elders pause in shaded plazas,
footsteps trace the water in quiet rhythm.*

*What was loss is now landscape—
an ecology restored, a public heart reborn.*



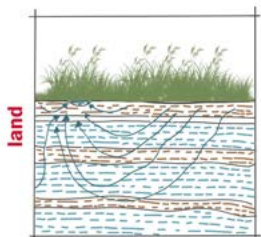
collect



levels



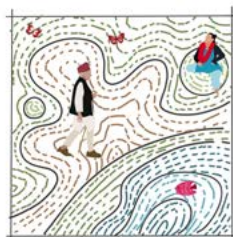
biodiversity



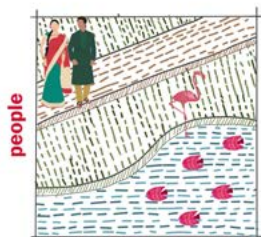
strata



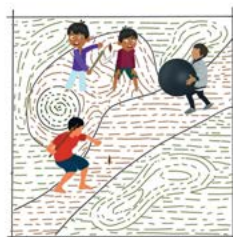
vegetation



form and space



interaction



play



gathering

A new vision

Where does water collect, move, and breathe?

Where does land rise to protect or frame?

Where do people gather, transition, and pause?



1. Entrance one
2. Entrance two
3. Gathering space
4. Kid's play area
5. Multi purpose court
6. Toilet and drinking water facility
7. Lake
8. Senior citizen park
9. Lawn
10. Sculptures
11. Filtration pond
12. Fountain
13. Gazebo
14. The jungle woods
15. Inaugural plantation by Mr. Amitbhai Shah
16. Parking
17. Service access
18. Souvenir shop
19. Percolation well
20. Filtration chambers

The lake is not drawn as a shape — it is released as a system. Catchment lines converge gently, in-flows and out-flows are disciplined, edges soften to welcome both birds and people.

The plan becomes a dialogue — between run off waters and monsoon rain, between shaded otlas and open sky, between the memory of a wetland and the promise of a resilient future.

This is not merely a redevelopment. It is restoration with intention. A landscape imagined through land, water, and people — held together in one unified vision.



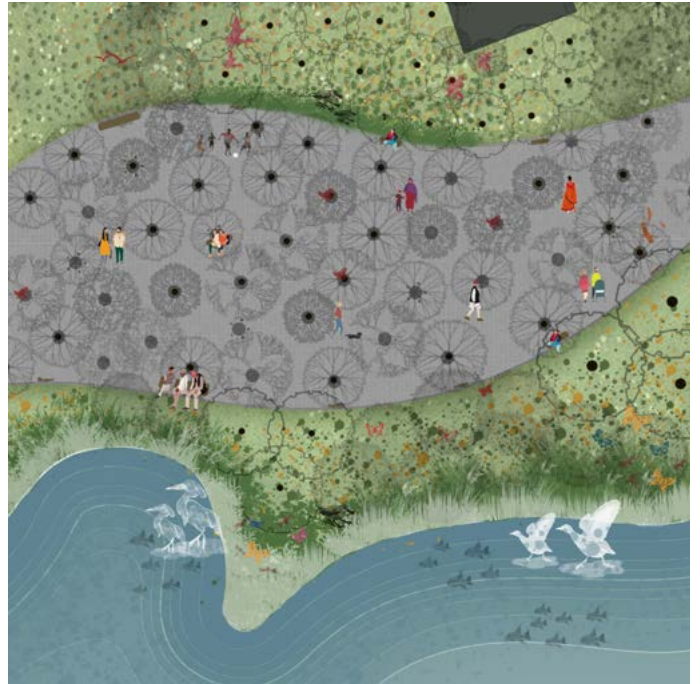
*An entrance plaza that welcomes
a lake that holds life
and a landscape that lets humans
and birds belong together.*



*An open plaza welcomes all,
Seats curve around soft lawns.
Circular greens invite gathering,
Space breathes with quiet warmth.*



*Gazebo beside the lake,
Windmill rises on the island.
Fauna nest along the edge,
Water, art, life aligned.*



*A restored lake, a thriving wetland
and a tree grove where every age finds it's place
Nature heals.
People return.*



Section AA



Section BB

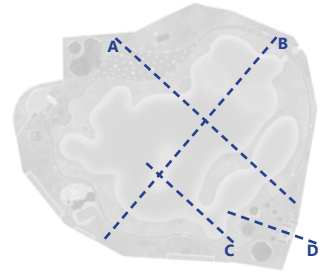


Section CC



Section DD

*In section,
water finds its rightful level.
Land frames the horizon.
People stand at the edge —
close to nature, yet gently held by design.*





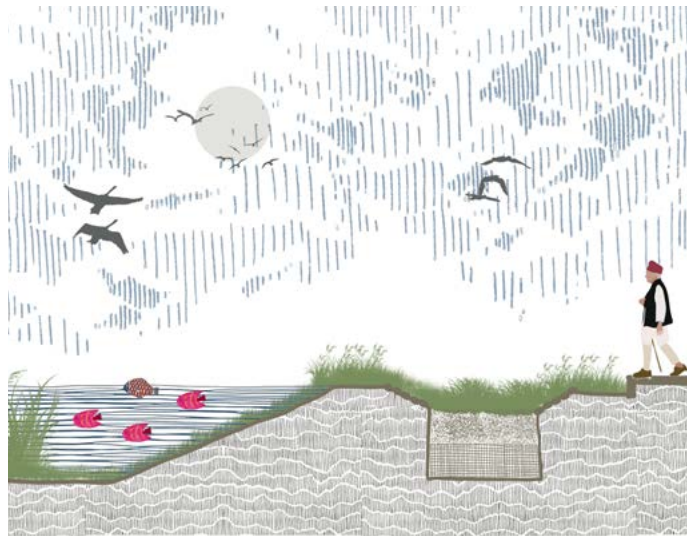
*Humans walk the shaded path,
By the curved lake edge.
Birds rest at root and water,
Trees guard the quiet.*



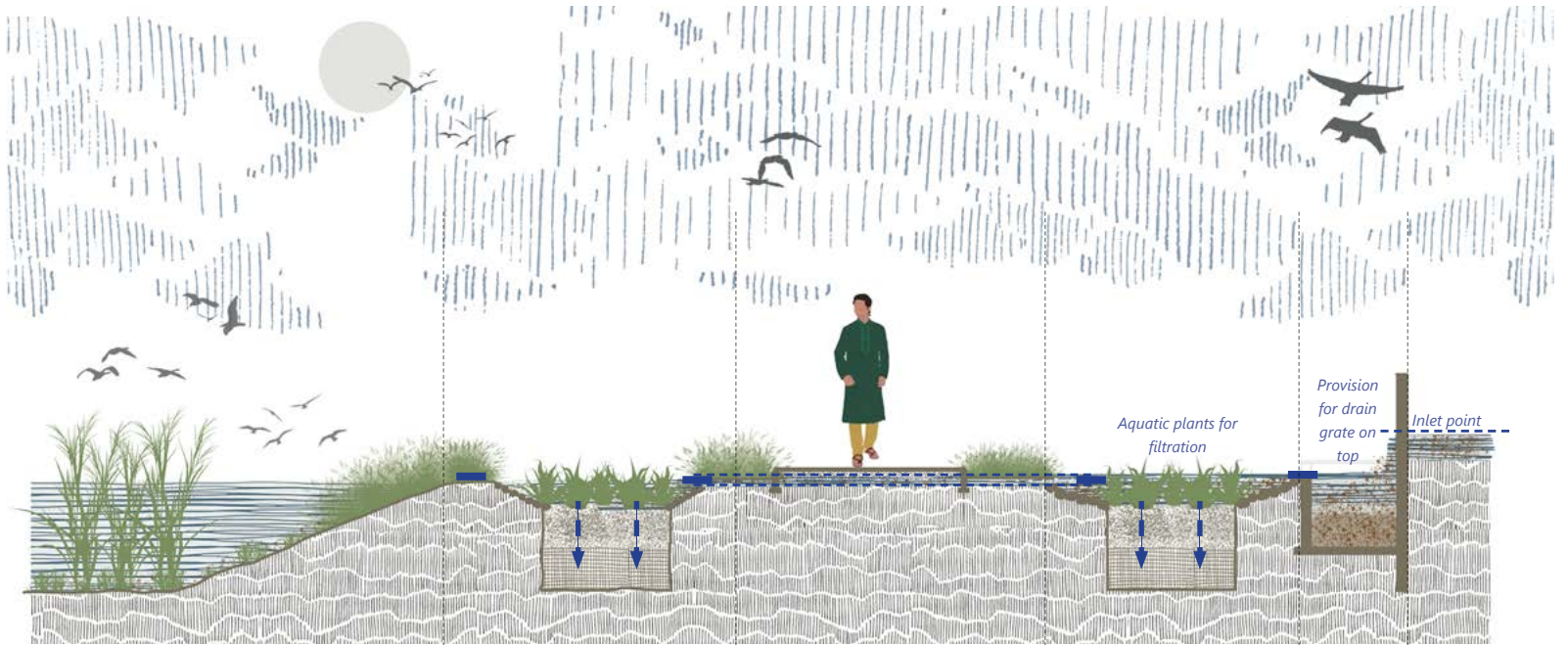
*An island rests in the lake,
Dense trees guard its heart.
Ripples ring the green refuge,
Birds call it home.*



*A gazebo by the lake edge,
Creepers cast soft shade.
Water glimmers beyond,
People sit in peace.*



*Walkway guides the slowing flow,
Through a hidden chamber below.
Cleared waters reach the lake,
Nature kept awake.*



Lake edge with vetiver grasses for natural filtration

Filtration chamber with bio retention soil and gravels - with stone pitching on edges

200mm dia. PVC pipe sleeve under walkway for water to travel to lake

Filtration chamber with bio retention soil and gravels - with stone pitching on edges

Chamber (2x3x2m)

Run off water from nearby villages and farmlands

Water flow and mechanics



From 2021, the earth opened — contours carved, waters invited back.

By 2023, edges formed and roots took hold in patient soil.

In 2025, planting matured into place — the lake complete, breathing life.



Emergence





Rebirth

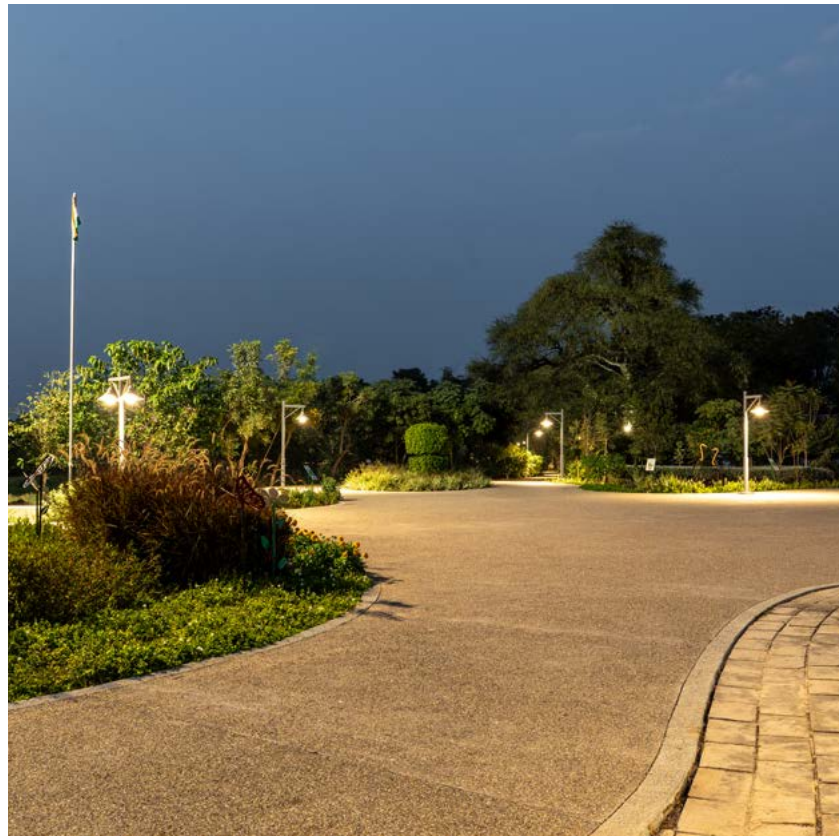














3000+ native trees - more than 70 species planted!

<i>Albizzia amara</i>	<i>Cassia siamea</i>	<i>Feronia limonia</i>
<i>Alstonia scholaris</i>	<i>Dalbergia sissoo</i>	<i>Ficus glomerata</i>
<i>Bombax ceiba</i>	<i>Erythrina stricta</i>	<i>Pithecollobium dulce</i>
<i>Ceiba pentandra</i>	<i>Erythrina variegata</i>	<i>Ixora parviflora</i>
<i>Holoptelea integrifolia</i>	<i>Gmelina arborea</i>	<i>Murraya koenigii</i>
<i>Madhuca longifolia</i>	<i>Pongamia pinnata</i>	<i>Spathodea campamulata lutea</i>
<i>Mimusops elengi</i>	<i>Acacia farnesiana</i>	<i>Tecoma gaudichaudi</i>
<i>Tabebuia rosea</i>	<i>Cassia roxburghii</i>	<i>Thespesia populnea</i>
<i>Terminalia arjuna</i>	<i>Citharexylum quadrangulare</i>	<i>Thevetia nerifolia</i>
<i>Ficus benghalensis</i>	<i>Cordia sebestena</i>	<i>Polyalthia longifolia</i>
<i>Terminalia catappa</i>	<i>Nyctanthes arbor-tristis</i>	<i>Averrhoa carambola</i>
<i>Lagerstroemia speciosa</i>	<i>Parkinsonia aculeata</i>	<i>Anona squamosa</i>
<i>Lagerstroemia parviflora</i>	<i>Plumeria alba</i>	<i>Tamarindus indica</i>
<i>Acacia auriculoformis</i>	<i>Plumeria rubra</i>	<i>Tectona grandis</i>
<i>Millingtonia hortensis</i>	<i>Plumeria obtusa</i>	<i>Ficus religiosa</i>
<i>Parkia biglandulosa</i>	<i>Tabebuia aurea</i>	<i>Acacia nilotica</i>
<i>Prosopis cineraria</i>	<i>Tabebuia avellandae</i>	<i>Acacia catechu</i>
<i>Aegle marmelos</i>	<i>Thevetia peruviana</i>	<i>Mitragyna parviflora</i>
<i>Azadirachta indica</i>	<i>Brya ebenus</i>	<i>Calophyllum inophyllum</i>
<i>Bauhinia purpurea</i>	<i>Peltoporum pterocarpum</i>	<i>Samanea saman</i>
<i>Bauhinia variegata</i>	<i>Golden Bamboo</i>	<i>Ficus benjamina</i>
<i>Butea monosperma</i>	<i>Delonix regia</i>	<i>Muntingia aculeata</i>
<i>Cassia fistula</i>	<i>Putranjiva roxburghii</i>	<i>Saraca asoca</i>
<i>Cassia javanica</i>	<i>Neolamarckia cadamba</i>	
<i>Callistemon viminalis</i>	<i>Dombeya wallichii</i>	

An ecological palette

30+ birds found their home!

<i>Rufous Treepie</i>	<i>Common babbler</i>
<i>Ashy Prinia</i>	<i>Red Naped Ibis</i>
<i>Purple sunbird</i>	<i>Indian Robin</i>
<i>Purple rumped sunbird</i>	<i>Oriental Magpie Robin</i>
<i>Red vented Bulbul</i>	<i>Black Drongo</i>
<i>Common tailorbird</i>	<i>Grey Francolin</i>
<i>Jungle Babbler</i>	<i>Green Bee Eater</i>





The makers

A special note of thanks to the makers of Anandam Jedva lake -

Aneel bhai Patel and entire Anandam parivaar

Site engineer- Hareshbhai and Marveen bhai

Landscape contractor - Vinod bhai (Vrundavan nursery , Vadsar)

*Behind every finished edge and planted tree
are countless hours of unseen effort.*

*To the engineers and makers on site —
this landscape stands because of you.*

Architect : Vicara Design Studio

Landscape Architect : Sculpting Grounds LLP.

Photography : Neesar (Tarun Hirapara)

*This space belongs to the people,
To footsteps, conversations, and quiet pauses.*

Walk freely, pause mindfully.

- Sculpting Grounds

